

# Stormwater Industry Meeting

SEPTEMBER 15, 2020

# What is Stormwater?

Rain or snowmelt that flows over streets, parking lots, buildings, lawns, etc, into the storm drain, through the outfall and into a creek, pond or other surface water.

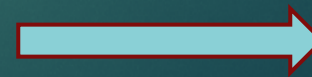


**Rain Run-Off**

**Storm inlet**

**Outfall**

**Pond**



# Stormwater Pollution

Run-off picks up contaminants as it flows over surfaces, such as:



**MOTOR OIL**



**SOAP**



**PAINT**



**SOIL & SILT**



**PET WASTE**

# Illegal Discharges to the Storm System



**Cleaning Equipment**



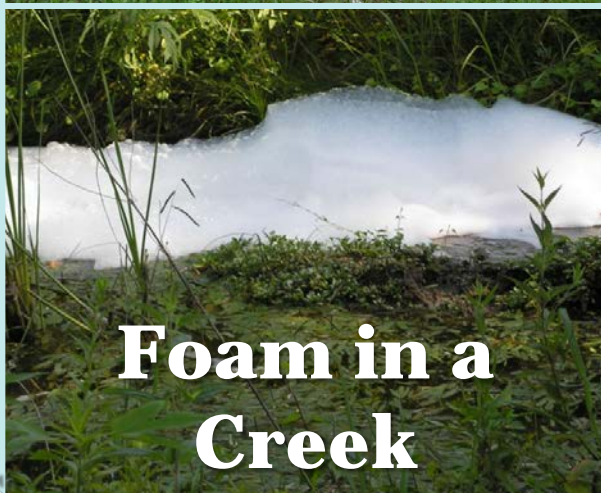
**Illegal Connection**



**Overflowing Grease Trap**



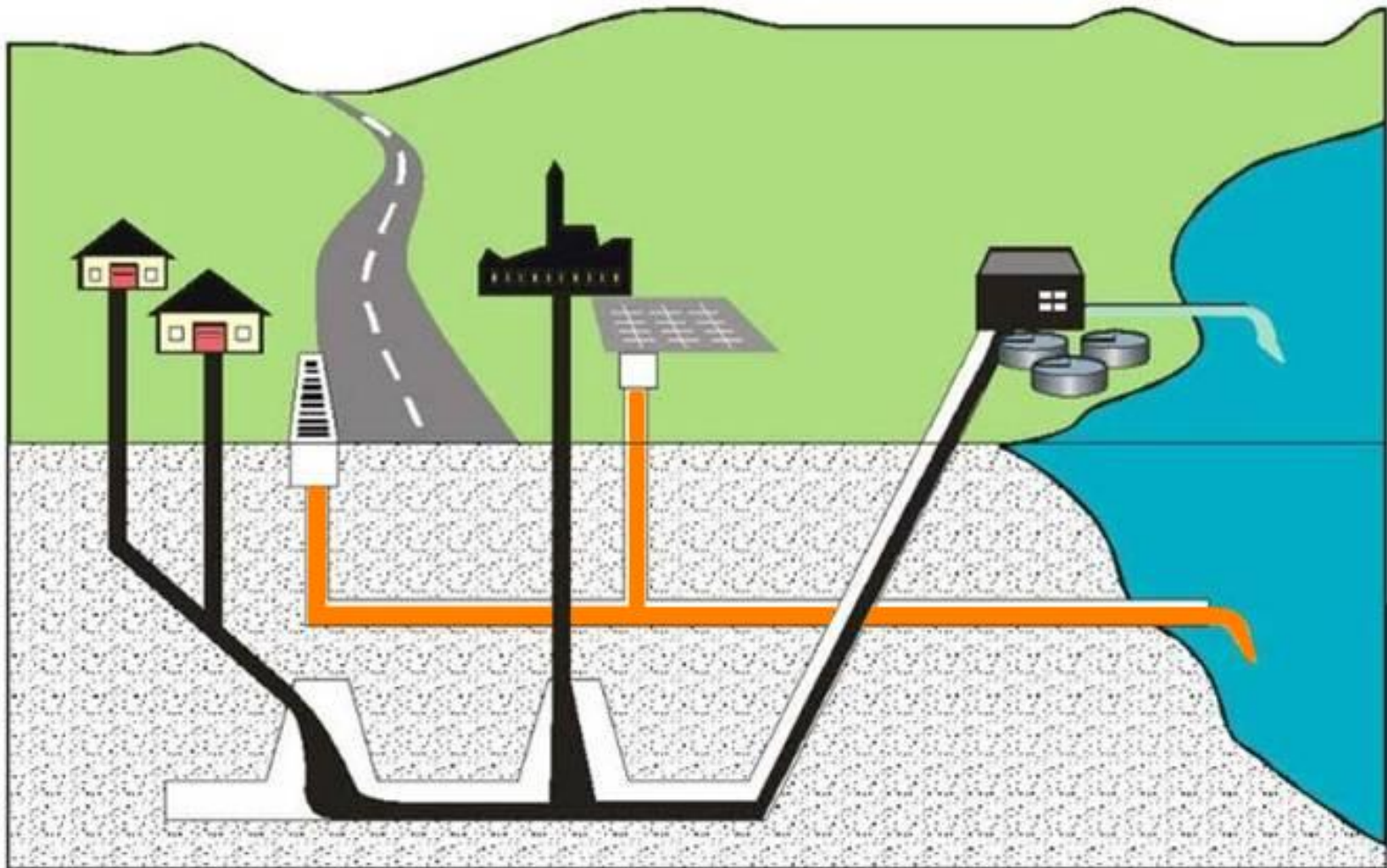
**Grass Clippings**



**Foam in a Creek**



**Leaking Trash Compactor**



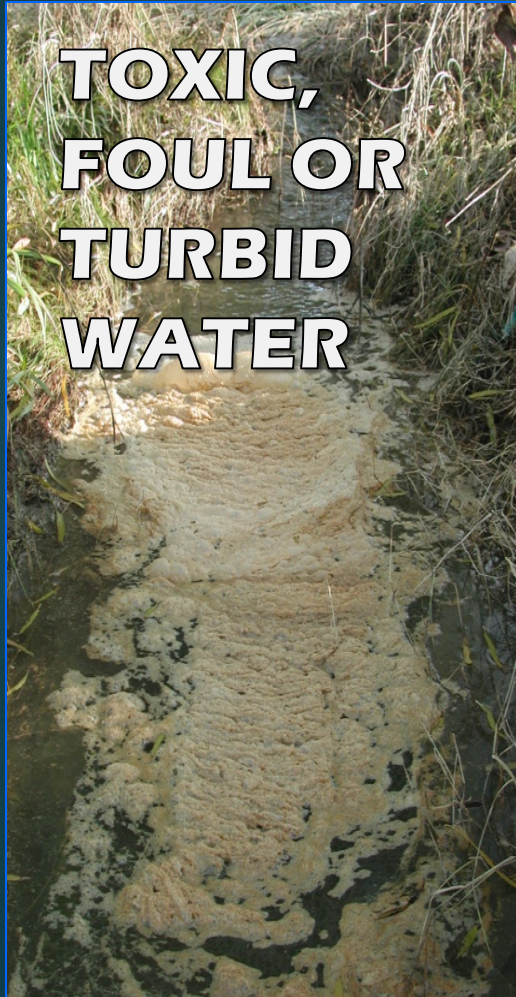
**Sanitary Sewer**

**STORM SEWER**

↓  
**Gets treated**

↓  
**DOES NOT GET TREATED**

When pollutants hit surface waters,  
causes a wide range of environmental  
and public health problems



# Stormwater Permits

- ▶ Multi Sector General Permit (MSGP)
- ▶ Construction General Permit (CGP)
- ▶ Municipal Separate Storm Sewer System (MS4) Permits
  - ▶ Phase 1 – Individual Permits
  - ▶ Phase 2 – General Permit



# MSGP! Multi Sector General Permit

- ▶ NEC – No exposure permit
  - ▶ Must continuously maintain NO EXPOSURE
  - ▶ Submit copy to the City
- ▶ SWPPP – Stormwater Pollution Prevention Plan
  - ▶ Submit a NOI (Notice of Intent)
  - ▶ Living and breathing document
  - ▶ Submit copy of the permit to the City and SWPPP upon request



# NEC – No exposure permit

No-exposure” means that all industrial activities are either conducted indoors or protected by a storm-resistant shelter to prevent exposure of those activities to rain, snow, snowmelt, or runoff. In this definition, “industrial activities” include, but are not limited to, the following:

- the storage, loading, unloading, or transport of raw materials, intermediate products, by-products, or final products
- the operation of machinery and equipment in manufacturing or other production processes
- waste management
- on-site fleet-maintenance



# Multi-Sector General Permit (MSGP)

- ◆ MSGP expires August 14, 2021
  - Obtain permit coverage within 90 days *after* expiration of current permit.
  - If NEC, Submit permit/certification to city.
  - If NOI, Submit permit/certification to the City
    - Perform inspections as required in the permit
    - Monitor as required in the permit
    - Update and Maintain your SWPPP



**Welcome to STEERS**, the State of Texas  
Environmental Electronic Reporting System.

**Here is what you can do online in STEERS:**

**e-Permits\Registration:**

- » Aggregate Production Operations Registration
- » Air New Source Review Registrations
- » CAFO General Permit
- » Concrete Batch Plants General Permit
- » Municipal Solid Waste Notifications
- » Pesticide General Permit
- » Petroleum Storage Tank (PST) Registrations
- » Storm Water General Permits (Construction & Multi-Sector)
- » Tax Relief for Pollution Control Property
- » Tier II Core Data

**e-Reporting:**

- » Annual Emissions Inventory Report (AEIR)
- » Air Emissions & Maintenance Events (AEME) Reporting
- » Emissions Banking and Trading (EBT)
- » Industrial & Hazardous Waste (IHW) NOR and Summaries
- » Municipal Solid Waste (MSW) Reporting
- » Pollution Prevention Planning (P2PLAN) Reporting
- » Public Drinking Water (PDW)
- » Tier II Reporting (TIERII)
- » Training Roster Online Submittal (TROLS)

See [details of what you can do](#).

This is STEERS version 6.3.

---

**Enter STEERS:**



**ER Account Number:**

**Password:**

Login

---

**I need:**

- [my password](#)
- [to create a new account](#)
- [to authorize another user's account](#)

---

**Find Out When STEERS Will Be Offline**

We do our best to ensure that STEERS is online when you need it. But for upgrades, security measures, and other maintenance, we must bring STEERS or one of its modules offline. We cannot predict emergency outages, but for scheduled downtimes, see our [STEERS maintenance schedule](#).

# MSGP Continued

- ✓ Information about the MSGP possible changes:  
[https://www.tceq.texas.gov/permitting/stormwater/stormwater\\_stakeholders\\_group.html#MS4%20RenewalDischarges to Water](https://www.tceq.texas.gov/permitting/stormwater/stormwater_stakeholders_group.html#MS4%20RenewalDischarges%20to%20Water)

# **Carrollton's Storm Water Pollution Prevention Ordinance**

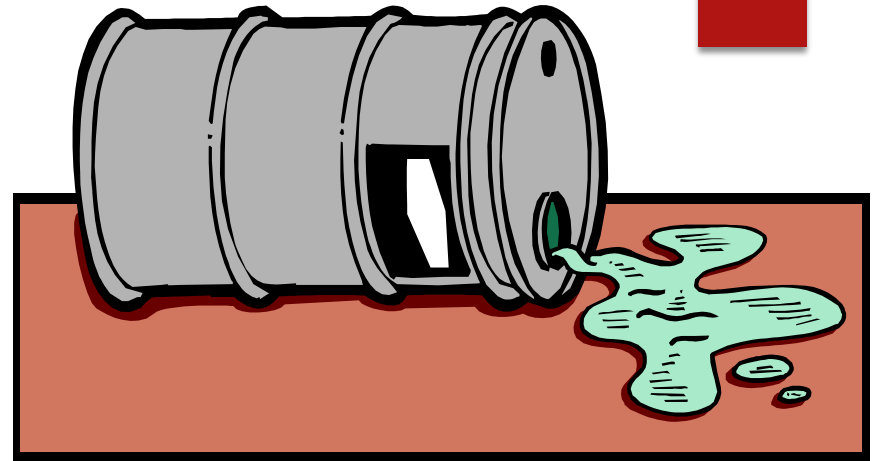
- ▶ **§173.09 Storm Water Discharges Associated with Industrial Activity**
  - ▶ Permit – submit copy of NEC/NOI to the city
    - ▶ SWPPP – preparation, updates
    - ▶ Inspections
    - ▶ Monitoring
  - ▶ Enforcement

# Common Stormwater Issues

- ▶ Spills and Discharges
- ▶ Open or un-covered dumpsters
- ▶ Dumpsters without plugs
- ▶ Leaking trash compactors
- ▶ Vehicle Washing
- ▶ Un-capped or rusted 55gl Drums
- ▶ Power washing

# Washing Vehicles and Spills/Discharges

- ▶ Washing Vehicles
  - ▶ Done in a wash bay with a grit trap
  - ▶ Garden hose without the use of detergents
- ▶ Spills and Discharges
  - ▶ Contain spills and clean-up as soon as possible
  - ▶ Do not hose off to street, storm drain or creek
  - ▶ Report Spill to appropriate agencies





# Report Spills or Discharges in Texas to 1-800-832-8224

## The Who, What, and Where of Spill Reporting

A responsible party must report a spill of a reportable quantity (RQ) as soon as possible but not later than 24 hours after the discovery of the spill or discharge to the Texas Spill Reporting Hotline at 1-800-832-8224 or the appropriate regional office of the TCEQ during normal office hours.

The RQ depends on the substance released and where it was released. To determine whether you must report and under what rule, use the [Reportable Quantities Table](http://www.tceq.texas.gov/response/spills/spill_rq.html). <www.tceq.texas.gov/response/spills/spill\_rq.html>

Depending on location and type of spill, reporting could be to another state agency such as the Texas General Land Office or the Railroad Commission of Texas.

## Summary of What to Do After a Spill

### Answer these questions:

- What type of material spilled?
- What is the amount of material spilled?
  - Oil, petroleum product, and used oil will be in gallons.
  - Hazardous substances and industrial solid waste will be in pounds.
- Was the spill onto land or into waters of the state?
- Is it a reportable quantity?
  - If so, what is the appropriate agency to report the spill to?

**Mitigate, contain, and remediate all spills and discharges.**

## What to Include in the Initial Report

### Contact information:

- The name, address and telephone number of the person making the telephone report.
- If different from above, the names, addresses, and telephone numbers of the responsible person and the contact person at the location of the discharge or spill.

### What and where:

- The date, time, and location of the spill or discharge.
- A specific description or identification of the oil, petroleum product, hazardous substances or other substances discharged or spilled.
- An estimate of the quantity discharged or spilled and the duration of the incident.
- The source of the discharge or spill.
- The name of the surface water or a description of the waters in the state affected or threatened by it.
- A description of the extent of actual or potential water pollution or harmful impacts to the environment and an identification of any environmentally sensitive areas or natural resources at risk.
- Any known or anticipated health risks.
- A description of any actions that have been taken, are being taken, and will be taken to contain and respond to the discharge or spill.

### Response and actions:

- The identity of any governmental representatives, including local authorities or third parties, responding to it.
- Any other information that may be significant to the response action.

For additional information on initial notification requirements, refer to Title 30, Texas Administrative Code Section 327.3.

## Examples of Reportable Quantities

Kind of Spill	Where Discharged	Reportable Quantity	Agency
Petroleum product, used oil (e.g. hydraulic fluid)	Onto land, or onto land from a non-exempt PST facility	25 gallons	TCEQ
Petroleum product, used oil	*Onto land, from an exempt PST facility	210 gallons (five barrels)	TCEQ
Any oil	Into coastal waters	As required by the Texas General Land Office	Texas General Land Office (1-800-832-8224)
Industrial solid waste (e.g. lime slurry)	Into waters in the state	100 pounds	TCEQ
Hazardous substance (e.g. 2,4-D herbicide)	Onto land	see Table 302.4 in 40 CFR §302.4	TCEQ

\* Petroleum storage tank (PST) exempted facilities are electric service facilities including generation, transmission, distribution equipment and transformers; petrochemical plants; petroleum refineries; bulk loading facilities; and pipelines that are exempted from the Aboveground Storage Tank (AST) regulation under 30 TAC, Subsection 334.123(a)(9) and (b), and 30 TAC, Subsection 334.124(a)(4).

## Additional Resources

See the [Spills and Discharges webpage](http://www.tceq.texas.gov/response/spills) <www.tceq.texas.gov/response/spills> | [30 TAC Chapter 327 - Spill Prevention and Control](http://www.tceq.texas.gov/goto/view-30tac) <www.tceq.texas.gov/goto/view-30tac> | [EPA's Consolidated List of Chemicals](http://www.epa.gov/sites/production/files/2015-03/documents/list_of_lists.pdf) [PDF] <www.epa.gov/sites/production/files/2015-03/documents/list\_of\_lists.pdf> | [EPCRA Section 302 Extremely Hazardous Substances](http://www.epa.gov) | [CERCLA Hazardous Substances](http://www.epa.gov) | [EPCRA Section 313 Toxic Chemicals](http://www.epa.gov) | [CAA 112\(r\) Regulated Chemicals for Accidental Release Prevention](http://www.epa.gov)



A person wearing high-visibility yellow and grey work clothes and black boots is using a power washer on a paved surface. The power washer nozzle is spraying water onto the ground. The background shows a dark, textured wall and some greenery.

# Power Washing

POWER WASHING IS NOT ALLOWED UNLESS:

- ALL STORM DRAIN INLETS ARE BLOCKED, AND ALL WASTEWATER IS CAPTURED/RECOVERED

MAY USE A GARDEN HOSE TO CLEAN PARKING LOT BUT MUST:

- PICK/SWEEP UP ALL TRASH PRIOR TO HOSING;
- CLEAN ALL MOTOR OIL OR FOOD GREASE SPILLS WITH KITTY LITTER PRIOR TO HOSING;
- NOT USE ANY SOAPS, SOLVENTS OR DEGREASERS UNLESS POWER WASHING RULES ARE FOLLOWED.

# Why do we do these things?



# Shorter Video



# Volunteer Opportunities for Industries

- ▶ Place Storm Drain Markers on Storm Drain Inlets
- ▶ Participate in or Organize a Creek Clean-Up Event
- ▶ Adopt-A-Spot



Adopt-A-Spot

This Spot Maintained by:

Your  
Name  
Here

 CARROLLTON  
TEXAS

# Contact Information

- ▶ Devan Jones  
Stormwater Coordinator  
972-466-3035  
Devan.Jones@cityofcarrollton.com
- ▶ Megan Davidson  
Pretreatment Coordinator  
972-466-3055  
Megan.Davidson@cityofcarrollton.com
- ▶ Erin McKeown  
Environmental Quality Code Officer  
972-466-3058  
Erin.Mckeown@cityofcarrollton.com