



# **Stormwater**

**Industry Meeting  
September 25, 2019**

# *What is Stormwater?*

Rain or snowmelt that flows over streets, parking lots, buildings, lawns, etc, into the storm drain, through the outfall and into a creek, pond or other surface water.



**Rain Run-Off**



**Storm inlet**



**Outfall**



**Pond**



# Stormwater Pollution

Run-off picks up contaminants as it flows over surfaces, such as:



**TRASH**



**MOTOR OIL**



**SOAP**



**PAINT**



**SOIL & SILT**



**PET WASTE**

# Illegal Discharges to the Storm System



**Cleaning Equipment**



**Illegal Connection**



**Overflowing Grease Trap**



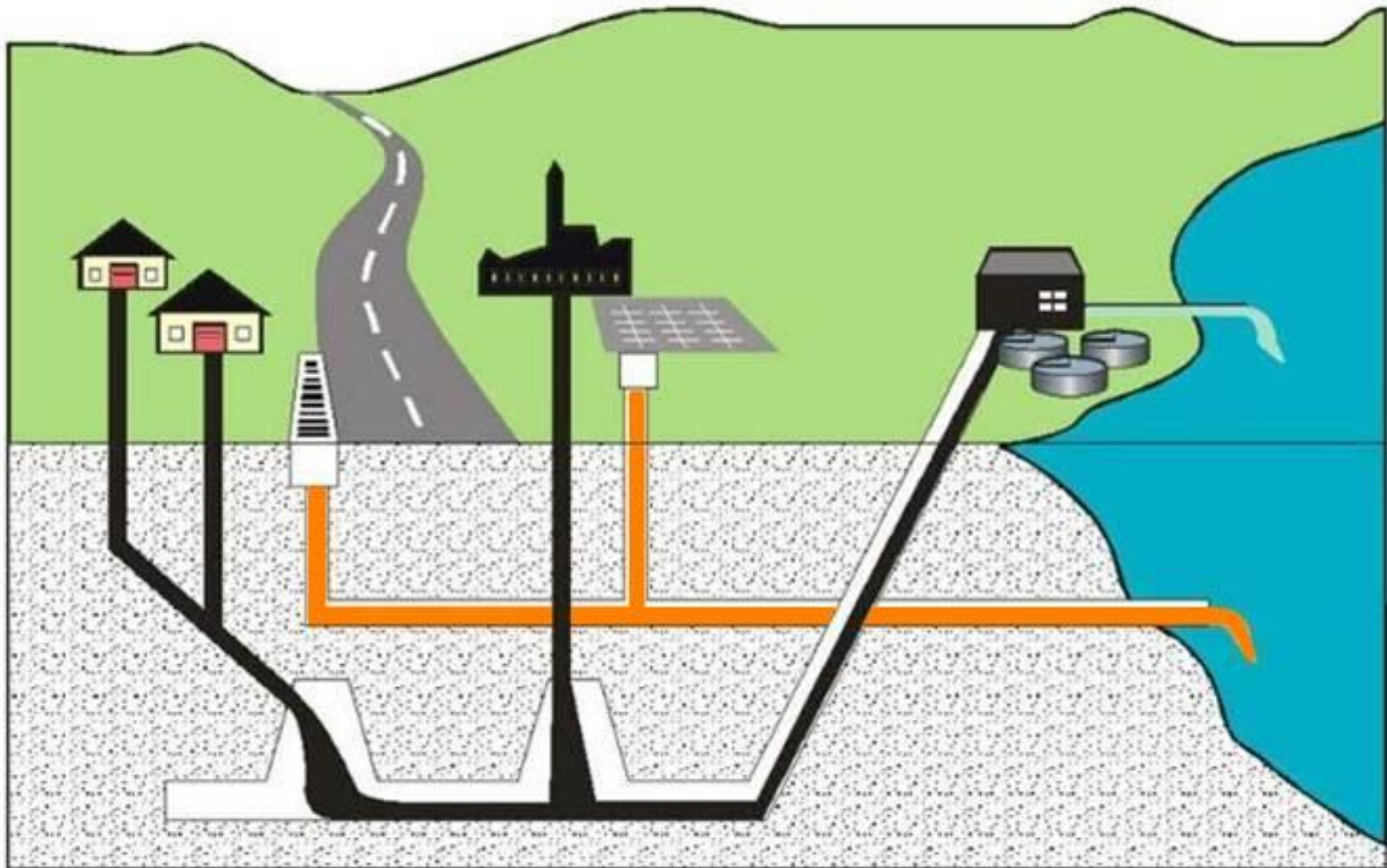
**Grass Clippings**



**Foam in a Creek**



**Leaking Trash Compactor**



**Sanitary Sewer**

**STORM SEWER**

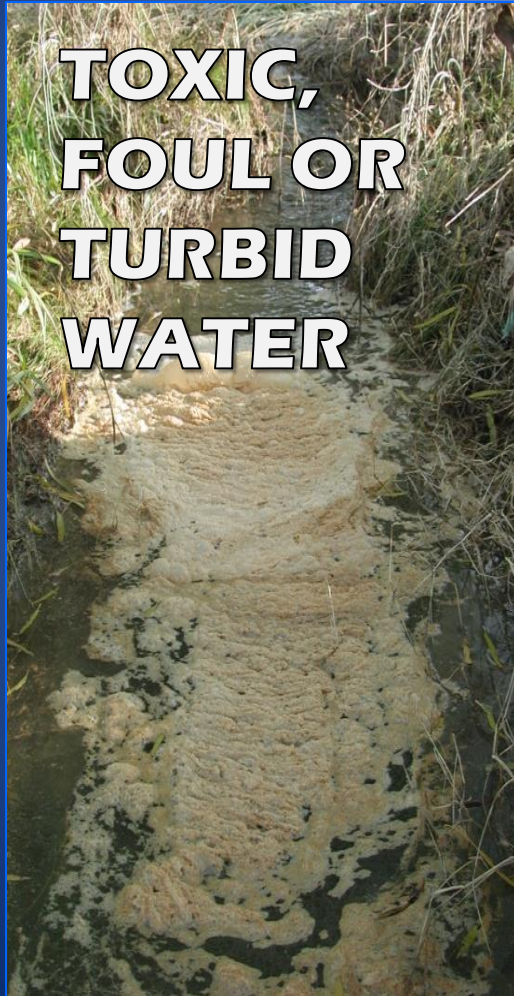


**Gets treated**



**DOES NOT GET TREATED**

# When pollutants hit surface waters, it causes a wide range of environmental and public health problems



# Who Regulates Stormwater

- Clean Water Act
- Environmental Protection Agency (EPA)
- Texas Commission on Environmental Quality
- Municipalities



# Stormwater Permits

- Multi Sector General Permit (MSGP)
- Construction General Permit (CGP)
- Municipal Separate Storm Sewer System (MS4) Permits
  - Phase 1 – Individual Permits
  - Phase 2 – General Permit







# STORMWATER MANAGEMENT PROGRAM

**To prevent or reduce pollutants  
from getting carried by storm  
water into creeks, ponds, lakes  
and rivers.**

# Requirements for Small MS4's

- **Stormwater Management Program (SWMP) Minimum Control Measures (MCMs)**
  1. **Public Education, Outreach and Involvement**
  2. **Illicit Discharge Detection and Elimination**
  3. **Construction Site Stormwater Runoff**
  4. **Post-Construction Stormwater Runoff Management in New Development and Redevelopment**
  5. **Pollution Prevention/Good Housekeeping for Municipal Operations**
  6. **Industrial Stormwater Sources**
  7. ***Authorization for Construction Activities where the Small MS4 is the Site Operator***

# City of Carrollton's Stormwater Management Plan and Industries

- **Public Education:**
  - Industry Meeting,
  - Educational Materials
- **Inspections of Industrial Facilities:**
  - Regulated and Non-Regulated Industries
  - Identify those that need to apply for the Multi Sector General Permit based on SIC code
  - Illicit Discharges



# Stormwater Inspections

Inspections occur yearly during your Industries Annual Inspection! These inspections will include:

- General stormwater overview
- SWPPP review – if applicable
- NEC permit compliance – if applicable

# General Stormwater Issues

- Spills and Discharges
- Open or un-covered dumpsters
- Dumpsters without plugs
- Leaking trash compactors
- Vehicle Washing
- Un-capped or rusted 55gl Drums
- Powerwashing

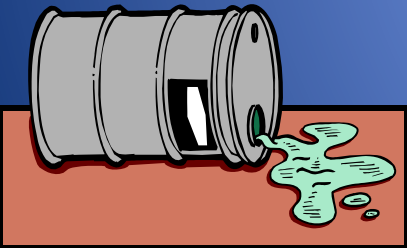
# Washing Vehicles and Spills/Discharges

- Washing Vehicles at Commercial or Industrial Facilities:

- Done in a wash bay with a grit trap
- Garden hose without the use of detergents or spray nozzle
- Mobile Carwash

- Spills and Discharges

- Contain spills and clean-up as soon as possible
- Do not hose off to street, storm drain or creek
- Report Spill to appropriate agencies



# POWER WASHING



💧 Power Washing is NOT allowed unless:

- ✓ All storm drain inlets are blocked and
- ✓ All wastewater is captured/recovered

💧 May use a garden hose to clean parking lot but must:

- ✓ Pick/sweep up all trash prior to hosing;
- ✓ Clean all motor oil or food grease spills with kitty litter or other absorbent prior to hosing;
- ✓ Not use any soaps, solvents, or degreasers unless power washing rules are followed.

# Spills and Discharges











# SWPPP Review common issues

- Spills and Discharges
- Not conducting exceedance investigations
- Not conducting inspections
- Keeping up with rain gauge

# NEC Permit Compliance

- Are any industrial materials, activities, or areas exposed to stormwater (including using, storing, or cleaning industrial machinery or equipment, and including areas where residuals from using, storing, or cleaning industrial machinery or equipment may exist)?
- Are any materials or residuals from spills or leaks on the ground or in stormwater inlets exposed to stormwater?
- Are any materials or products from past industrial activities exposed to stormwater?
- Is any material-handling equipment (except adequately maintained vehicles) exposed to stormwater?
- Are there any materials or products that may be exposed to stormwater during loading, unloading, or transporting activities (except where the materials, while protected from contact with precipitation, are being moved between buildings at the site by vehicles that are adequately maintained)?
- Are there any materials or products stored outside that may be exposed to stormwater (except for final products intended for outdoor use where exposure to stormwater does not result in the discharge of pollutants)?
- Are any materials contained in open, deteriorated, or leaking storage drums, barrels, tanks, or similar containers that may be exposed to stormwater?
- If a road or railway located at the facility is owned or maintained by the facility, are there materials or products handled or stored on that road or railway that may be exposed to stormwater?
- Is any waste material (except waste in covered, non-leaking containers) exposed to stormwater?
- Are there any activities that include the application or disposal of process wastewater that are not covered by a current permit?
- Is there any particulate matter or visible deposits of residuals from roof stacks or vents not otherwise regulated (i.e., under an air-quality permit) and evident in the stormwater discharge?

# **Be Prepared!**

- **Stocked Spill Kit - Block Inlets!!!**
- **Train employees**
- **Report the spill**
- **Clean-up/Remediation**

# Volunteer Opportunities

- Adopt-A-Spot
  - Two year commitment
  - Quarterly clean-ups
  - Signs marking location
- Creek Clean-up
- Storm Drain Marking



# Living and Playing



# Relaxing and Having Fun





# Contact Us

Erin McKeown

Environmental Quality Code Officer

972-466-3035

[Erin.Mckeown@cityofcarrollton.com](mailto:Erin.Mckeown@cityofcarrollton.com)

Megan Davidson

Pretreatment Coordinator

972-466-3055

[Megan.Davidson@cityofcarrollton.com](mailto:Megan.Davidson@cityofcarrollton.com)

Devan Jones

Stormwater Coordinator

972-466-3035

[Devan.jones@cityofcarrollton.com](mailto:Devan.jones@cityofcarrollton.com)

